

FRONT ELEVATION  
 Secretary  
 Shiva Educational Society  
 Ghumarwin, Distt. Bilaspur (H.P.)

प्रधान  
 ग्राम पंचायत लुहारवी  
 विकास खण्ड धुमारवी,  
 जिला बिलासपुर (दि.प्र.)

SHIVA EDUCATIONAL  
 SOCIETY PANOL  
 ABDHANIGHAT, GHUMARWIN  
 DISTT. BILASPUR. (H.P.)  
 REGT. NO.: - 347/06  
 DATED:-6/9/2006

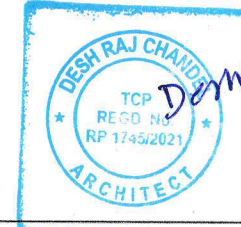
SHIVA COLLEGE OF EDUCATION  
 VILL. BAROTA, P.O. LUHARWIN  
 TEH. GHUMARWIN DISTT.  
 BILASPUR.  
 (H.P.) 174021.

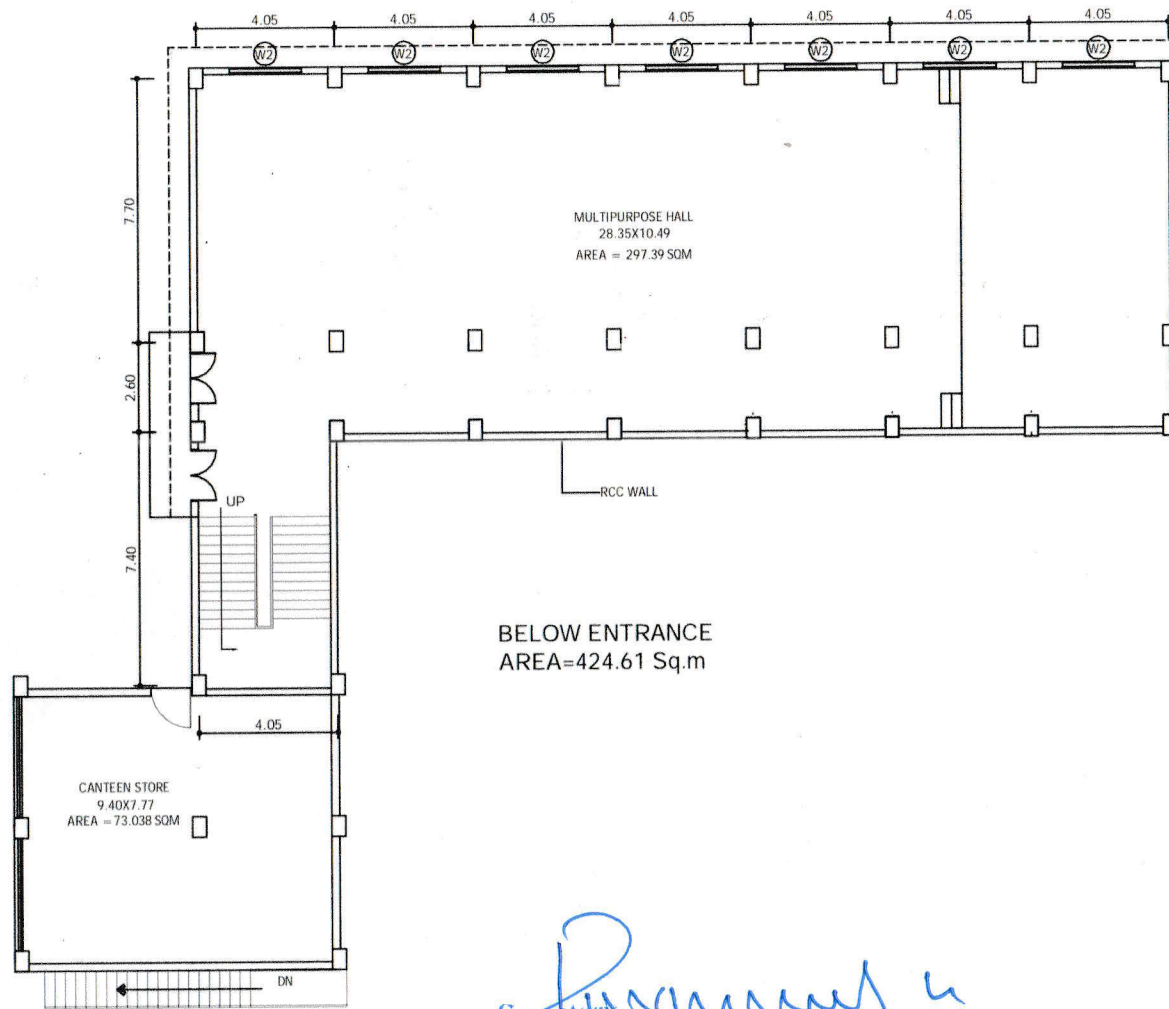
KHASHRA NO.  
 193/1, 193/2, 193/3, 495/192/2,  
 195, 197/1, 197/3

SCHEDULE OF DOORS & WINDOWS

TYPE	WIDTH	HEIGHT	CILL	DESCRIPTION
D	120	210	-	DOOR
D1	75	210	-	"
W2	210	165	85	WINDOW
V	60	95	165	VENT
W3	150	165	85	WINDOW

ARCHITECT





BELOW ENTRANCE  
AREA=424.61 Sq.m

Secretary  
Shiva Educational Society  
Ghumarwin, Distt. Bilaspur (H.P.)

प्रधान  
शिव पंचायत लुहारवी  
विकास अण्ड घुमारवी,  
जिला बिलासपुर (छ.प्र.)

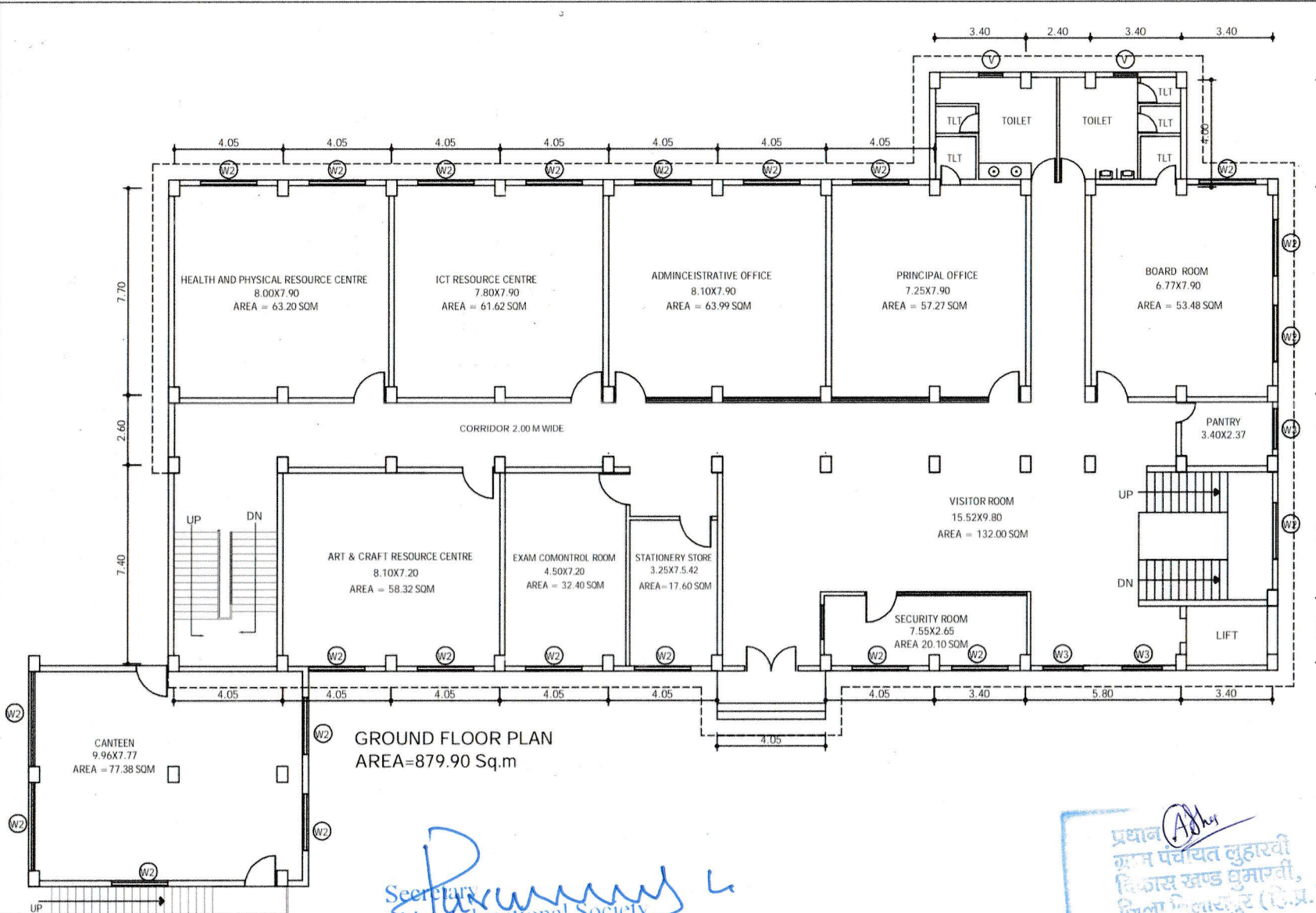
AREA STATEMENT	
PLOT AREA = 4027.00 SQ.M	
	BUILTUP AREA
BELOW ENT.	424.61 SQM
GROUND FLOOR	879.90 SQM
FIRST FLOOR	794.90 SQM
SCOND FLOOR	794.90 SQM
THIRD FLOOR	794.90 SQM
4TH FLOOR	794.90 SQM
TOTAL BUILTUP AREA = 4484.11 SQ.M	

SHIVA EDUCATIONAL SOCIETY PANOL  
ABDHANIGHAT, GHUMARWIN  
DISTT. BILASPUR. (H.P.)  
REGT. NO.: - 347/06  
DATED: - 6/9/2006

SHIVA COLLEGE OF EDUCATION  
VILL. BAROTA, P.O. LUHARWIN  
TEH. GHUMARWIN DISTT.  
BILASPUR.  
(H.P.) 174021.  
KHASHRA NO.  
193/1, 193/2, 193/3, 495/192/2,  
195, 197/1, 197/3

SCHEDULE OF DOORS & WINDOWS				
TYPE	WIDTH	HEIGHT	CILL	DESCRIPTION
D	120	210	-	DOOR
D1	75	210	-	"
W2	210	165	85	WINDOW
V	60	95	165	VENT
W3	150	165	85	WINDOW

ARCHITECT  
DISH RAJ CHANDEL  
TCP  
REGD. No.  
RP 1745/2021  
ARCHITECT



Secretary  
 Shiva Educational Society  
 Ghumarwin Distt. Bilaspur (H.P.)

प्रधान (A.H.)  
 ग्राम पंचायत लुहारवी  
 विकास सखंड घुमारवी,  
 जिला बिलासपुर (छ.प्र.)

AREA STATEMENT	
PLOT AREA = 4027.00 SQ.M	
	BUILTUP AREA
BELOW ENT.	424.61 SQM
GROUND FLOOR	879.90 SQM
FIRST FLOOR	794.90 SQM
SCOND FLOOR	794.90 SQM
THIRD FLOOR	794.90 SQM
4TH FLOOR	794.90 SQM
TOTAL BUILTUP AREA = 4484.11 SQ.M	

SHIVA EDUCATIONAL SOCIETY PANOL  
 ABDHANIGHAT, GHUMARWIN  
 DISTT. BILASPUR. (H.P.)  
 REGT. NO.: 347/06  
 DATED: 6/9/2006

SHIVA COLLEGE OF EDUCATION  
 VILL. BAROTA, P.O. LUHARWIN  
 TEH. GHUMARWIN DISTT.  
 BILASPUR.  
 (H.P.) 174021.

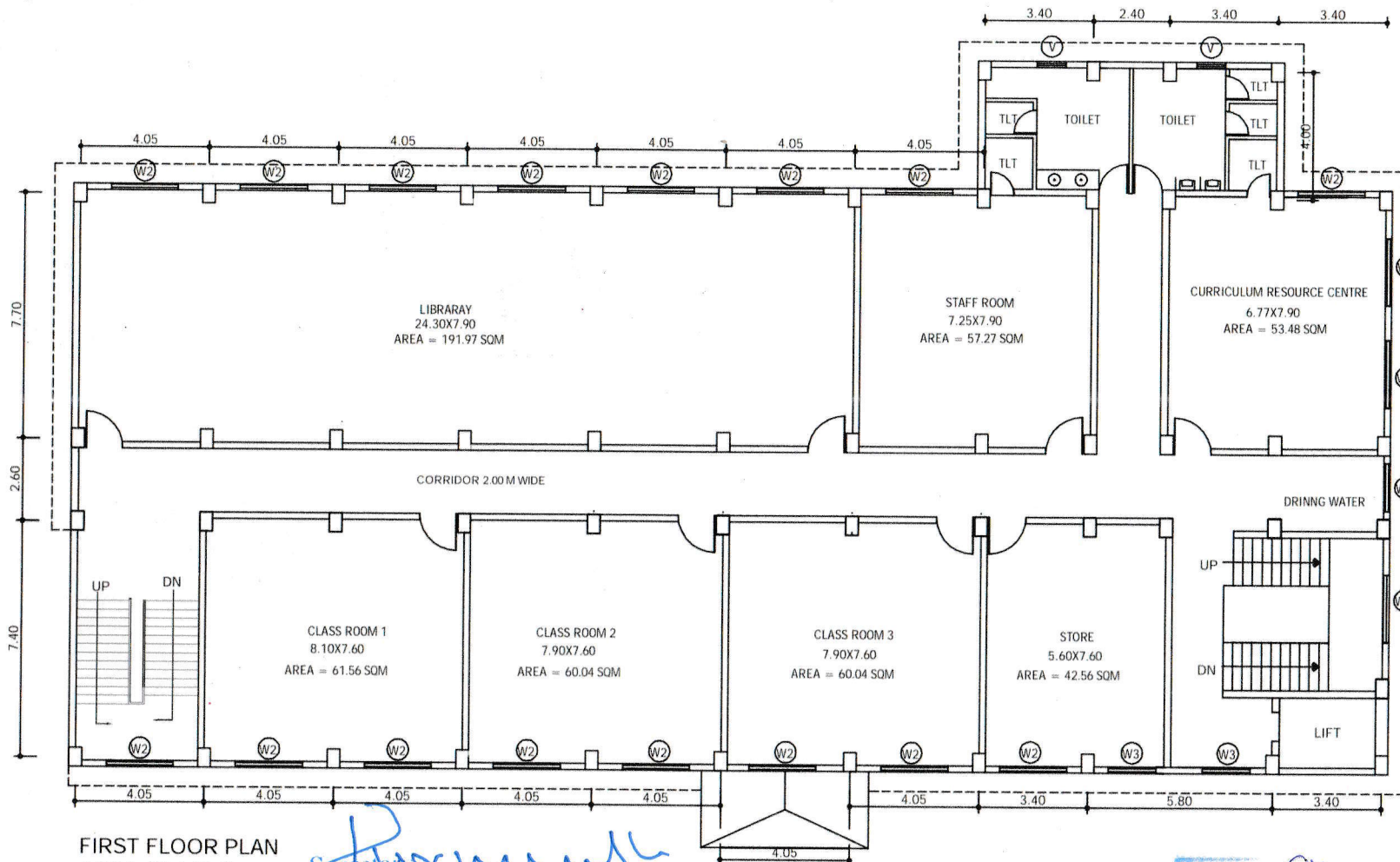
KHASHRA NO.  
 193/1, 193/2, 193/3, 495/192/2,  
 195, 197/1, 197/3

SCHEDULE OF DOORS & WINDOWS

TYPE	WIDTH	HEIGHT	CILL	DESCRIPTION
D	120	210		DOOR
D1	75	210		
W2	210	165	85	WINDOW
V	60	95	165	VENT
W3	150	165	85	WINDOW

ARCHITECT





FIRST FLOOR PLAN  
AREA=794.90 Sq.m

*Secretary*  
Shiva Educational Society  
Ghumarwin, Distt. Bilaspur (H.P.)

*Pradhan*  
कृष्ण पंचायत लुहारवी  
विकास समिति  
बिलासपुर (H.P.)

4.00  
7.70  
2.60  
5.00  
2.40

AREA STATEMENT	
PLOT AREA = 4027.00 SQ.M	
BUILTUP AREA	
BELOW ENT.	424.61 SQM
GROUND FLOOR	879.90 SQM
FIRST FLOOR	794.90 SQM
SCOND FLOOR	794.90 SQM
THIRD FLOOR	794.90 SQM
4TH FLOOR	794.90 SQM
TOTAL BUILTUP AREA = 4484.11 SQ.M	

SHIVA EDUCATIONAL SOCIETY PANOL  
ABDHANIGHAT, GHUMARWIN  
DISTT. BILASPUR. (H.P.)  
REGT. NO.: 347/06  
DATED: 6/9/2006

SHIVA COLLEGE OF EDUCATION  
VILL. BAROTA, P.O. LUHARWIN  
TEH. GHUMARWIN DISTT.  
BILASPUR.  
(H.P.) 174021.

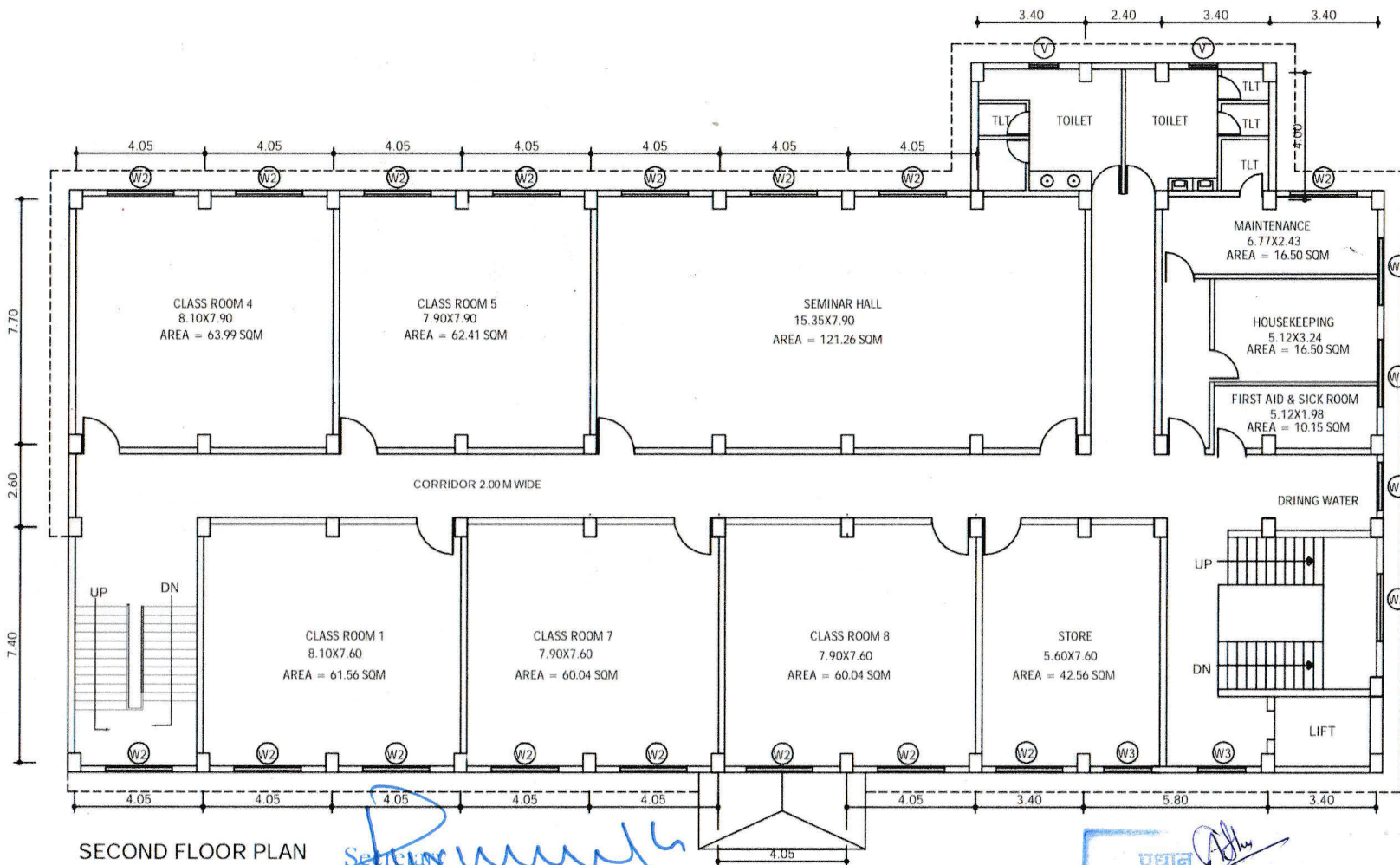
KHASHRA NO.  
193/1, 193/2, 193/3, 495/192/2,  
195, 197/1, 197/3

SCHEDULE OF DOORS & WINDOWS

TYPE	WIDTH	HEIGHT	CILL	DESCRIPTION
D	120	210		DOOR
D1	75	210		
W2	210	165	85	WINDOW
V	60	95	165	VENT
W3	150	165	85	WINDOW

ARCHITECT





SECOND FLOOR PLAN  
AREA=794.90 Sq.m

*Signature*  
Shiva Educational Society  
Ghumarwin, Distt. Bilaspur (H.P.)

*Signature*  
प्रधान  
ग्राम पंचायत लुहारवी  
विकास खण्ड गुमारवी,  
जिला बिलासपुर (छ.प्र.)

4.00  
7.70  
2.60  
5.00  
2.40

AREA STATEMENT	
PLOT AREA = 4027.00 SQ.M	
BUILTUP AREA	
BELOW ENT.	424.61 SOM
GROUND FLOOR	879.90 SOM
FIRST FLOOR	794.90 SOM
SCOND FLOOR	794.90 SOM
THIRD FLOOR	794.90 SOM
4TH FLOOR	794.90 SOM
TOTAL BUILTUP AREA = 4484.11 SQ.M	

SHIVA EDUCATIONAL SOCIETY PANOL  
ABDHANIGHAT, GHUMARWIN  
DISTT. BILASPUR. (H.P.)  
REGT. NO.:- 347/06  
DATED:- 6/9/2006

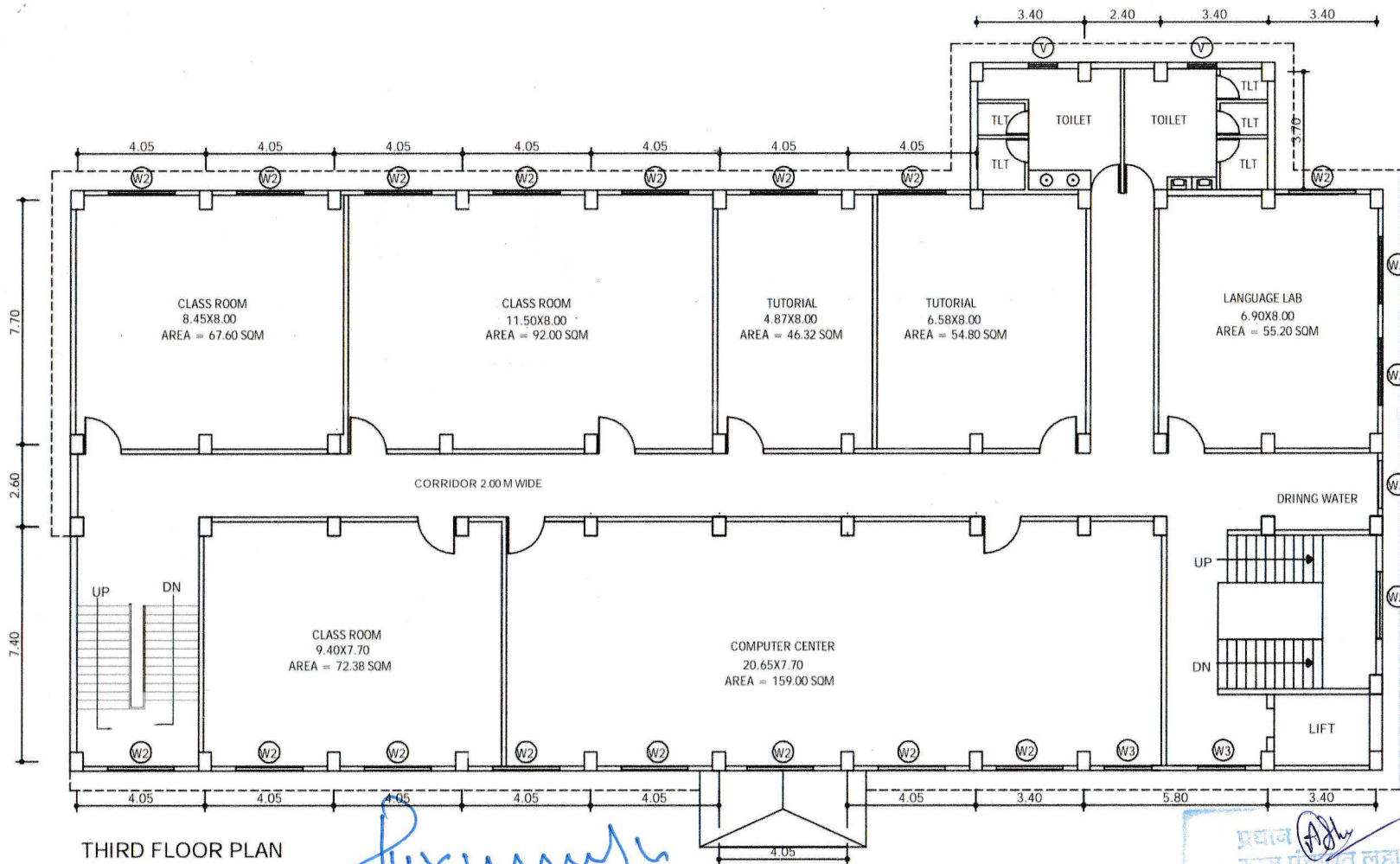
SHIVA COLLEGE OF EDUCATION  
VILL. BAROTA, P.O. LUHARWIN  
TEH. GHUMARWIN DISTT.  
BILASPUR.  
(H.P.) 174021.  
KHASHRA NO.  
193/1, 193/2, 193/3, 495/192/2,  
195, 197/1, 197/3

SCHEDULE OF DOORS & WINDOWS

TYPE	WIDTH	HEIGHT	CILL	DESCRIPTION
D	120	210		DOOR
D1	75	210		
W2	210	165	85	WINDOW
V	60	95	165	VENT
W3	150	165	85	WINDOW

ARCHITECT





THIRD FLOOR PLAN  
AREA=794.90 Sq.m

*Secretary*  
Secretary  
Shiva Educational Society  
Ghumarwin, Distt. Bilaspur (H.P.)

प्रधान  
आम पंचायत लुहारवी  
विकास सॉफ्ट बुमारवी,  
जिला बिलासपुर (हे.प.)

4.00  
7.70  
2.60  
5.00  
2.40

AREA STATEMENT	
PLOT AREA = 4027.00 SQ.M	
BUILTUP AREA	
BELOW ENT.	424.61 SOM
GROUND FLOOR	879.90 SQM
FIRST FLOOR	794.90 SOM
SCOND FLOOR	794.90 SQM
THIRD FLOOR	794.90 SOM
4TH FLOOR	794.90 SOM
TOTAL BUILTUP AREA = 4484.11 SQ.M	

SHIVA EDUCATIONAL  
SOCIETY PANOL  
ABDHANIGHAT, GHUMARWIN  
DISTT. BILASPUR. (H.P.)  
REGT. NO.:- 347/06  
DATED:- 6/9/2006

SHIVA COLLEGE OF EDUCATION  
VILL. BAROTA, P.O. LUHARWIN  
TEH. GHUMARWIN DISTT.  
BILASPUR.  
(H.P.) 174021.

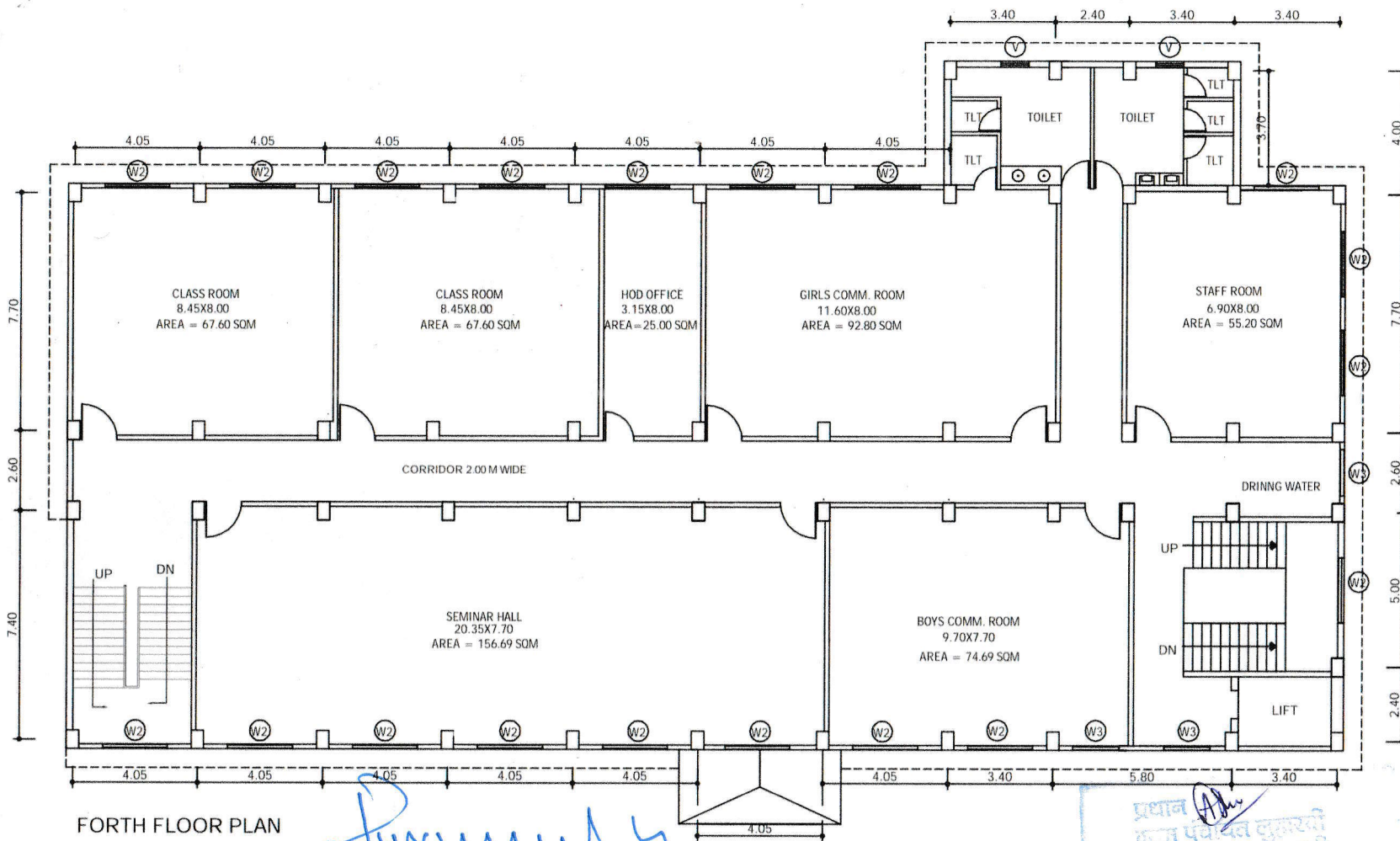
KHASHRA NO.  
193/1, 193/2, 193/3, 495/192/2,  
195, 197/1, 197/3

SCHEDULE OF DOORS & WINDOWS

TYPE	WIDTH	HEIGHT	CILL	DESCRIPTION
D	120	210	-	DOOR
D1	75	210	-	"
W2	210	165	85	WINDOW
V	60	95	165	VENT
W3	150	165	85	WINDOW

ARCHITECT





FORTH FLOOR PLAN  
AREA=794.90 Sq.m

*Secretary*  
Shiva Educational Society  
Ghumarwin, Distt Bilaspur (H.P.)

प्रधान  
श्रीमान पंचवर्षी लुहारवी  
विकास सण्ड घुमारवी,  
जिला बिलासपुर (छ.प्र.)

AREA STATEMENT	
PLOT AREA = 4027.00 SQ.M	
BUILTUP AREA	
BELOW ENT.	424.61 SQM
GROUND FLOOR	879.90 SQM
FIRST FLOOR	794.90 SQM
SCOND FLOOR	794.90 SQM
THIRD FLOOR	794.90 SQM
4TH FLOOR	794.90 SQM
TOTAL BUILTUP AREA = 4484.11 SQ.M	

SHIVA EDUCATIONAL  
SOCIETY PANOL  
ABDHANIGHAT, GHUMARWIN  
DISTT. BILASPUR. (H.P.)  
REGT. NO.:- 347/06  
DATED:- 6/9/2006

SHIVA COLLEGE OF EDUCATION  
VILL. BAROTA, P.O. LUHARWIN  
TEH. GHUMARWIN DISTT.  
BILASPUR.  
(H.P.) 174021.

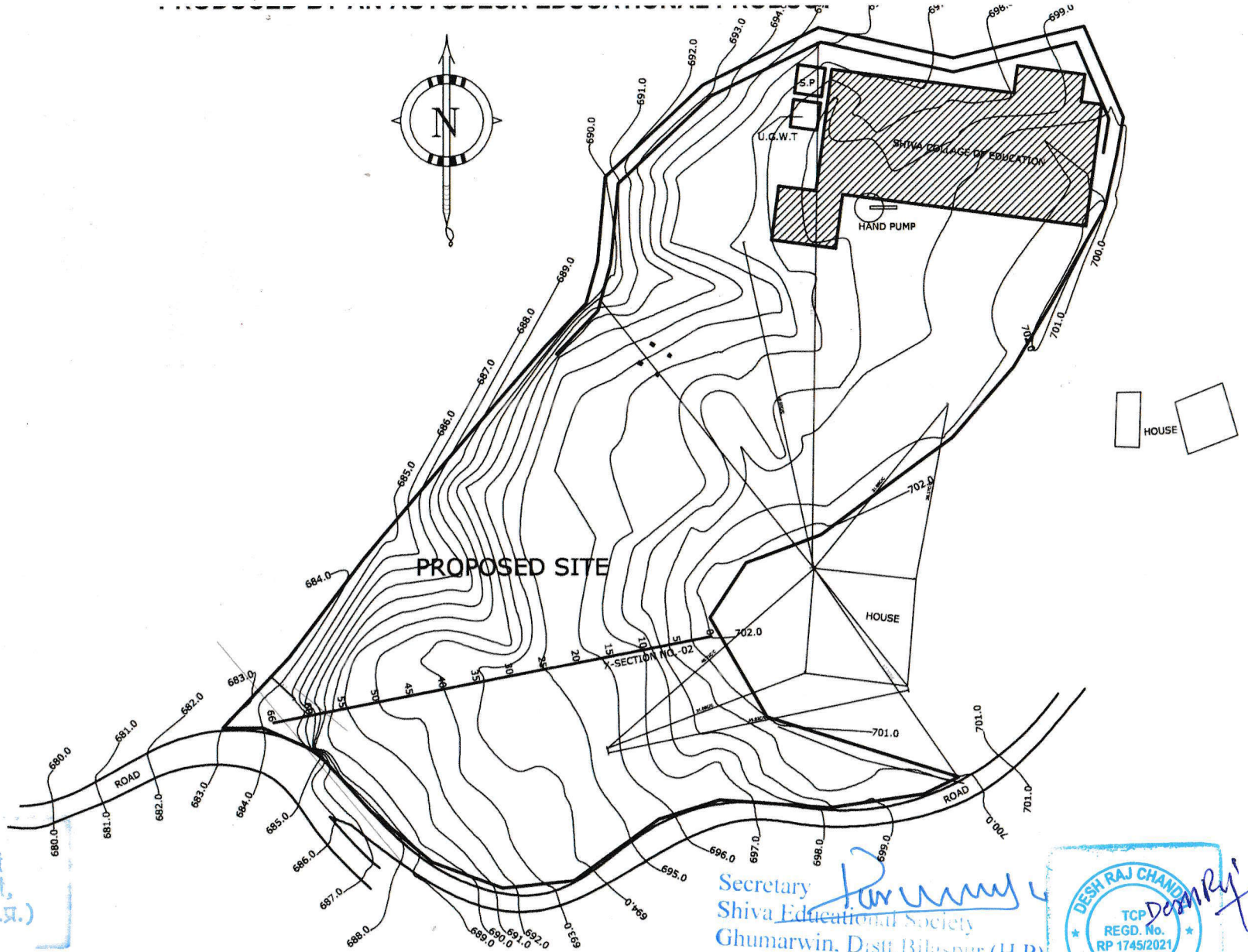
KHASHRA NO.  
193/1, 193/2, 193/3, 495/192/2,  
195, 197/1, 197/3

SCHEDULE OF DOORS & WINDOWS

TYPE	WIDTH	HEIGHT	CILL	DESCRIPTION
D	120	210	-	DOOR
D1	75	210	-	-
W2	210	165	85	WINDOW
V	60	95	165	VENT
W3	150	165	85	WINDOW

ARCHITECT





प्रधान  
ग्राम पंचायत लुहारवी  
विकास खण्ड गुमारवी,  
जिला बिलासपुर (छ.प्र.)

Secretary  
Shiva Educational Society  
Ghumarwin, Distt. Bilaspur (H.P.)

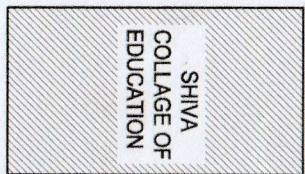
DESH RAJ CHAND  
TCP  
REGD. No.  
RP 1745/2021  
ARCHITECT

SHIVA EDUCATIONAL SOCIETY  
PANOL ABDHANIGHAT, GHUMARWIN  
DISTT. BILASPUR. (H.P.)  
REGT. NO.- 347/06  
DATED-6/9/2006

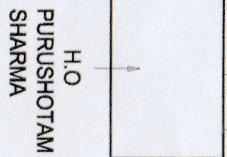
EXISTING SHIVA COLLEGE OF  
EDUCATION VILLAGE BAROTA  
P.O. LUHARWIN, TEH. GHUMARWIN,  
DISTT. BILASPUR (H.P.) 174021

KHASRA NO.  
193/1, 193/2, 193/3, 495/192/2  
195, 197/1, 197/3

MASTER PLAN/SITE PLAN



SHIVA  
COLLEGE OF  
EDUCATION

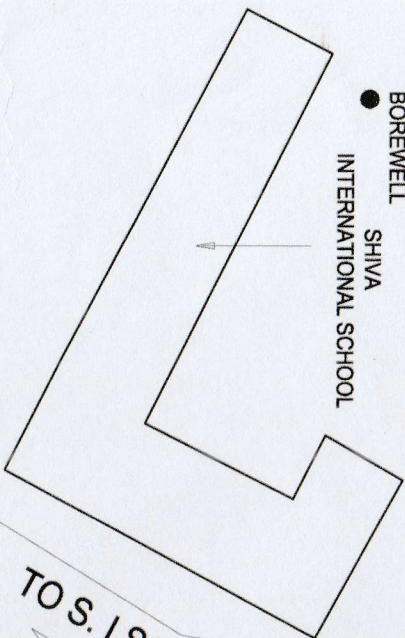


H.O.  
PURUSHOTAM  
SHARMA

TO HOUSE

TO BAROTA

BOREWELL  
● SHIVA  
INTERNATIONAL SCHOOL



TO S. I. SCHOOL

TO BAROTA

TO BAROTA

TO KUTHERA

TO GHUMARWIN

Secretary  
Shiva Educational Society  
Ghumarwin, Dist. Bilaspur (H.P.)



ARCHITECT

LOCATION PLAN

SHIVA COLLEGE OF EDUCATION  
VILL. BAROTA, P.O. LUHARWIN  
TEH. GHUMARWIN DIST.  
BILASPUR.

(H.P.) 174021.

KHASHRA NO.

193/1, 193/2, 193/3, 495/192/2,  
195, 197/1, 197/3

